



# Notice of Completion for an Environmental Screening Process

## Evaluation of Low Carbon Fuels – Projects 2 and 3

**Notice Date:** August 28, 2018

**Project Proponent:** Lafarge Canada Inc. ("Lafarge")

**Project Description:** Lafarge, Canada's largest diversified supplier of construction materials, has undertaken a broad initiative to improve the sustainability of their Bath cement plant by the year 2020, termed the Cement 2020 Initiative. Under this initiative, working in partnership with Queen's University, environmental non-government organizations and various levels of government, Lafarge is reducing its imported fossil fuel use, and so lowering its Green House Gas (GHG) emissions, through the use of local and/or regional, sustainable, Low Carbon Fuels (LCF). Lafarge is currently approved to use virgin biomass (crops such as switch grass and oat hulls), weathered treated wood (such as railway ties and utility poles), construction and demolition materials, and asphalt shingles in the cement manufacturing process. Lafarge is now using an Environmental Screening Process to assess the following additional LCFs under Projects – 2 and 3.

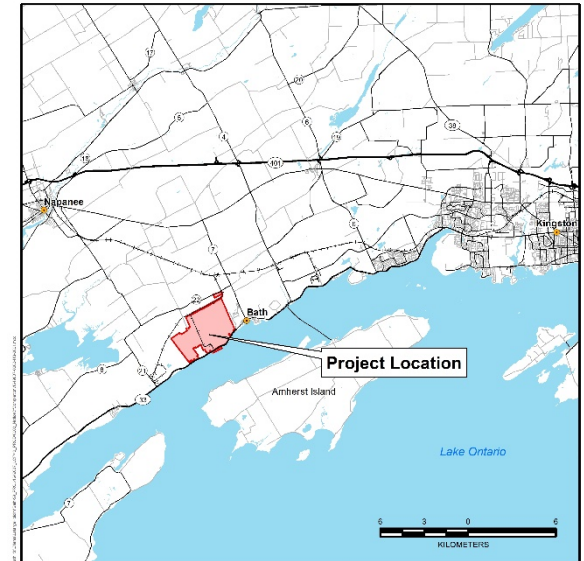
### Evaluation of Low Carbon Fuels – Project 2

- paper fibre/wood/plastic composite materials, such as manufacturing rejects and trimmings of unused off-spec personal hygiene products, household goods, packaging labels and tape;
- non-recyclable paper fibre packaging (and related similar products), such as rejects and trimmings from paper recycling facilities (i.e., ragger tails);
- textiles, carpet cuttings, manufacturing end rolls and cores; and
- disposable beverage cups and lids (e.g., K-cups).

### Evaluation of Low Carbon Fuels – Project 3

- Non-recyclable rubber (not including used tires) and rubber recycling by-products (e.g., polyester/nylon fiber from tire recycling facilities); and
- Non-recyclable plastics from Material Recovery Facilities and the Industrial, Commercial and Institutional sector.

**Project Location:** The Lafarge Bath Plant is located on Concession 1 (Broken Front Lot 4 to 6 and Lot 7 to 8 Part Lot plus open allowance) in Loyalist Township. It is on the north side of Highway No. 33, approximately 3 kilometres west of the Village of Bath, Ontario.



**Regulations:** LCF Projects 2 and 3 are being completed in accordance with the Ministry of Environment, Conservation and Parks (MECP) Environmental Screening Process for Waste Management Projects and Regulation 101/07 under the Ontario *Environmental Assessment Act*. An Environmental Screening Report will be completed for these projects according to the MECP's "Guide to Environmental Assessment Requirements for Waste Management Projects" (Guide; 2007) that documents the process followed and the conclusions reached.

**Environmental Screening Results:** The projects are expected to have an overall positive affect on the environment and benefit the community-at-large. Through the use of local and/or regional, and sustainable, LCF sources, Lafarge can reduce its imported fossil fuel use (with a current goal of a 30% reduction of fossil fuel use by the year 2020) and thereby reduce their emissions of GHG (specifically CO<sub>2</sub>). Lafarge intends to apply for the permits required to use these fuels on a permanent basis at the cement plant.

**Environmental Screening Report Review Location:** In accordance with the MECP Guide, Lafarge is notifying the public that the Environmental Screening Report is available for the 60-day public review and comment period until October 26, 2018. Hard copies of the Environmental Screening Report are available at the Bath Public Library (197 Davy Street, Bath, ON) and a digital copy is available on the Cement 2020 website ([www.cement2020.org](http://www.cement2020.org)). Please note that any comments submitted, and any personal information contained in the submission, will be maintained as part of a record available to the public.

**Elevation Requests:** If any person has outstanding environmental concerns about the project these concerns should be raised with Lafarge first by contacting Blair Walker via the contact information provided below. If Lafarge and the concerned persons are unable to resolve the matter, the concerned persons can make a written request to the Director of the Environmental Assessment and Permissions Branch of the MECP via the contact information provided below. Elevation requests must be submitted in writing to both the MECP and Lafarge by October 26, 2018 and include the following information:

- Name of the project and proponent;
- The basis of the request;
- That the project be elevated to an individual environmental assessment;
- The nature of the specific environmental concerns that remain unresolved;
- Benefits of requiring the proponent to undertake an individual environmental assessment;
- Information about any efforts to discuss/resolve these concerns/environmental effects with the proponent;
- Details of any correspondence between the person and the proponent; and
- Any other matters considered relevant to the requesting person.

Please note: Elevation requests are considered comments to a public process and information contained in a request will be maintained as part of the public record, will be shared with the proponent, and may be circulated to other stakeholders.

Mr. Blair Walker  
Environment and Public Affairs Manager, Eastern ON -  
Lafarge Canada Inc.  
1651 Bearbrook Road, Ottawa, ON, K1G 3K2  
Phone: 613-691-2491  
Email: [Blair.Walker@lafargeholcim.com](mailto:Blair.Walker@lafargeholcim.com)

Director  
Environmental Assessment and Permissions Branch  
Ministry of Environment, Conservation and Parks  
135 St. Clair Ave. W., 1st Floor  
Toronto, ON, M4V 1P5  
Email: [enviropemissions@ontario.ca](mailto:enviropemissions@ontario.ca)